

Supplementary data

| Vietnam | | Opening Date | Gross leasable area (m ²) | Parking (cars) | Planted trees | Mall Employees | Disabled parking lot | Solar power generation (kW) | High-efficiency air-conditioner | Human sensor lighting on / off control | Automatic escalator operation control | Murmuring river | Wastewater purification facility | EV charger station |
|----------------------|-----------------------------|---------------|---------------------------------------|--|---------------|----------------|----------------------|-----------------------------|---------------------------------|--|---------------------------------------|-----------------|----------------------------------|--------------------|
| 164. | AEON MALL Tan Phu Celadon | January 2014 | 84,000 | Motorcycle 11,000 Car 2,000 | 10,000 | 4,200 | 25 | — | — | — | ○ | — | ○ | — |
| 165. | AEON MALL Binh Tan | July 2016 | 60,000 | Motorcycle 4,000 Car 1,500 | 10,000 | 2,700 | 17 | 320 | ○ | ○ | ○ | — | ○ | — |
| 166. | AEON MALL Binh Duong Canary | November 2014 | 49,000 | Motorcycle 6,000 Car 1,000 | 10,000 | 2,700 | — | — | — | — | ○ | — | ○ | — |
| 167. | AEON MALL Long Bien | October 2015 | 74,000 | Motorcycle 10,000 Car 1,000 | 11,300 | 3,300 | 8 | — | ○ | ○ | ○ | — | ○ | — |
| 168. | AEON MALL Ha Dong | December 2019 | 74,000 | Motorcycle 9,000 Car 2,100 | 6,000 | 3,200 | 6 | — | ○ | — | — | — | — | 2 |
| 169. | AEON MALL Hai Phong Le Chan | December 2020 | 70,000 | Motorcycle 7,000 Car 1,700 | 10,000 | 4,200 | 19 | 535 | ○ | ○ | ○ | — | — | 3 |
| Vietnam Total | | | 411,000 | Motorcycle 47,000 Car 9,300 | 57,300 | 20,300 | 75 | 855 | 4 | 3 | 5 | 1 | 4 | 5 |

| Cambodia | | Opening Date | Gross leasable area (m ²) | Parking (cars) | Planted trees | Mall Employees | Disabled parking lot | Solar power generation (kW) | High-efficiency air-conditioner | Human sensor lighting on / off control | Automatic escalator operation control | Murmuring river | Wastewater purification facility | EV charger station |
|-----------------------|------------------------|--------------|---------------------------------------|---------------------------------------|---------------|----------------|----------------------|-----------------------------|---------------------------------|--|---------------------------------------|-----------------|----------------------------------|--------------------|
| 170. | AEON MALL Phnom Penh | June 2014 | 68,000 | Motorcycle 1,600 Car 2,300 | 10,000 | 3,600 | 9 | 225 | — | ○ | ○ | ○ | ○ | — |
| 171. | AEON MALL Sen Sok City | May 2018 | 85,000 | Motorcycle 3,000 Car 2,300 | 12,000 | 3,700 | 9 | 1,036 | ○ | ○ | ○ | ○ | ○ | 1 |
| Cambodia Total | | | 153,000 | Motorcycle 4,600 Car 4,600 | 22,000 | 7,300 | 18 | 1,261 | 1 | 2 | 2 | 2 | 2 | 1 |

| Indonesia | | Opening Date | Gross leasable area (m ²) | Parking (cars) | Planted trees | Mall Employees | Disabled parking lot | Solar power generation (kW) | High-efficiency air-conditioner | Human sensor lighting on / off control | Automatic escalator operation control | Murmuring river | Wastewater purification facility | EV charger station |
|------------------------|-------------------------------|----------------|---------------------------------------|---------------------------------------|---------------|----------------|----------------------|-----------------------------|---------------------------------|--|---------------------------------------|-----------------|----------------------------------|--------------------|
| 172. | AEON MALL BSD CITY | May 2015 | 77,000 | Motorcycle 2,300 Car 2,100 | 20,000 | 3,000 | — | 24 | — | ○ | ○ | ○ | — | — |
| 173. | AEON MALL Jakarta Garden City | September 2017 | 63,000 | Motorcycle 1,400 Car 3,000 | 8,000 | 1,300 | 20 | 510 | ○ | ○ | ○ | — | ○ | — |
| 174. | AEON MALL Sentul City | October 2020 | 70,000 | Motorcycle 1,400 Car 3,000 | — | 2,200 | 32 | — | — | — | ○ | — | ○ | — |
| Indonesia Total | | | 210,000 | Motorcycle 5,100 Car 8,100 | 28,000 | 6,500 | 52 | 534 | 1 | 2 | 3 | 1 | 2 | — |

| OPA | | Opening Date | Gross leasable area (m ²) | Parking (cars) | Site area (m ²) | Total Floor area (m ²) | Number of specialty stores |
|------------------|----------------------------|----------------|---------------------------------------|----------------|-----------------------------|------------------------------------|----------------------------|
| 175. | Akita OPA | October 2017 | 11,500 | 3,000 | 2,800 | 19,800 | 200 |
| 176. | Mito OPA | March 2017 | 12,100 | 1,310 | 3,500 | 25,500 | 500 |
| 177. | Takasaki OPA | October 2017 | 25,600 | 7,000 | 7,400 | 42,000 | 1,200 |
| 178. | Seisekisakuragaoka OPA | September 1999 | 16,000 | 370 | 9,000 | 23,400 | 700 |
| 179. | Hachioji OPA | November 2018 | 6,200 | 1,000 | 4,000 | 10,100 | 400 |
| 180. | Shinyurigaoka OPA | November 1997 | 12,700 | 100 | 5,000 | 22,290 | 1,100 |
| 181. | Shonan fujisawa OPA | March 1996 | 9,700 | 530 | 2,100 | 19,000 | 600 |
| 182. | Nagoya mozo OPA | April 2009 | 3,200 | — | — | 3,500 | 100 |
| 183. | Kawaramachi OPA | November 1998 | 10,300 | — | 2,700 | 18,900 | 400 |
| 184. | Shinsaibashi OPA | November 1994 | 11,200 | — | 2,800 | 27,000 | 800 |
| | Shinsaibashi OPA Kirei-Kan | August 1998 | 2,400 | — | 1,000 | 4,900 | 100 |
| 185. | Sannomiya OPA | March 1984 | 6,100 | — | 1,500 | 10,800 | 300 |
| 186. | Sannomiya OPA2 | February 2017 | 11,400 | 770 | 4,700 | 17,600 | 500 |
| 187. | Canalcity OPA | April 1996 | 15,800 | 1,300 | — | 26,000 | 1,000 |
| 188. | Oita OPA | June 2019 | 1,200 | 1,600 | 2,400 | 7,500 | 400 |
| 189. | Naha OPA | October 2018 | 5,200 | 450 | 12,801 | 7,600 | 300 |
| 190. | VIVREGENE Lake Town | November 2011 | 2,900 | 10,400 | — | 4,300 | 200 |
| 191. | Yokohama VIVRE | April 1985 | 18,700 | 120 | 6,000 | 44,800 | 1,000 |
| 192. | YOKOHAMA WORLD PORTERS | September 1999 | 37,700 | 1,000 | 20,000 | 100,400 | 1,600 |
| 193. | Kitaaji VIVRE | March 1995 | 22,900 | 480 | 17,600 | 76,200 | 600 |
| 194. | Akashi VIVRE | October 1997 | 18,200 | 690 | 11,700 | 53,200 | 700 |
| 195. | Sendai FORUS | November 1984 | 14,500 | 4,000 | 4,300 | 32,000 | 400 |
| 196. | Kanazawa FORUS | November 2006 | 26,100 | 4,300 | 100,300 | 60,300 | 1,800 |
| OPA Total | | | 301,600 | 38,420 | 221,601 | 657,090 | 14,900 |

Employee data: Consolidated (as of the end of February 2021)

| | FY2019 | FY2020 |
|---|------------------|--------------------------------|
| Number of employees <i>*(of which part time)</i> | 3,447 (1,480) | 3,656 (1,552) |

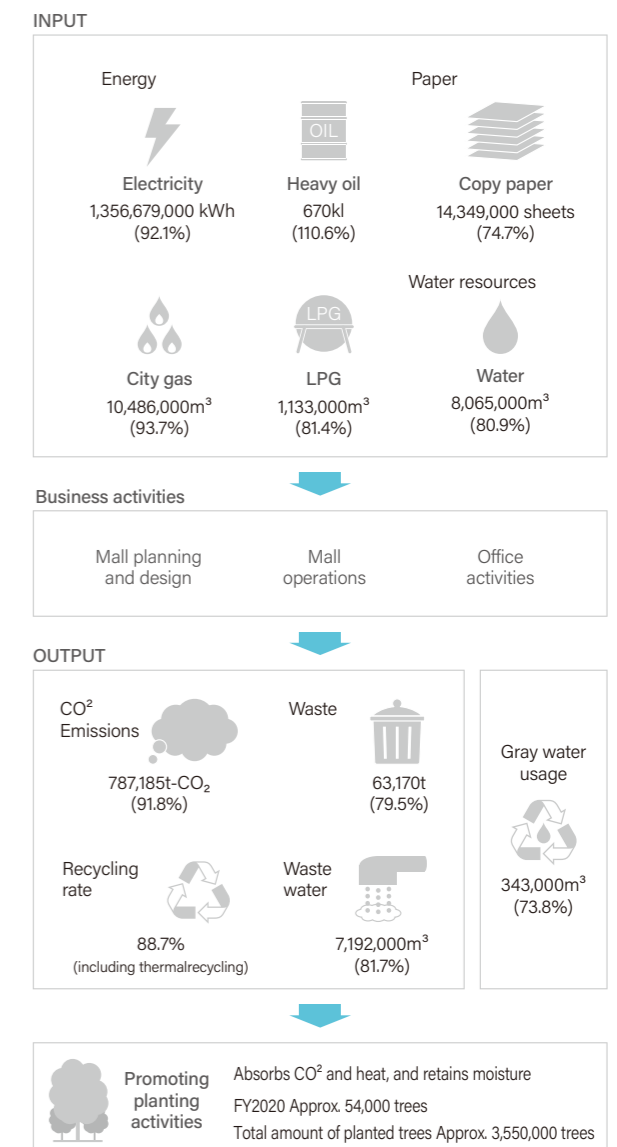
Employee data: Non-consolidated (as of the end of February 2021)

| | FY2019 | FY2020 |
|---|--|--|
| Number of employees <i>*(of which part time)</i> (1) Male (2) Female | 1,788 (1,284) (1) 1,168 (154) (2) 620 (1130) | 1,842 (1,349) (1) 1,196 (150) (2) 646 (1,199) |
| New employees (Male/Female) | 100 (57/43) | 87 (46/41) |
| Management personnel Among which, female management personnel | 891 155 (17.4%) | 912 165 (18.0%) |
| Directors Among which, female directors | 18 4 (22.2%) | 18 4 (22.2%) |
| Employees who have received childcare leave (of which male) | 54 (15) | 52 (23) |

Number of local staff members in overseas subsidiaries

| | FY2019 | FY2020 |
|--------------|--------|--------------|
| Total | 1,288 | 1,429 |
| China | 766 | 790 |
| ASEAN region | 522 | 639 |

FY2020 INPUT / OUTPUT (80 shopping malls in Japan)



* The statistics is based on shopping malls as a whole, including public areas, AEON and specialty stores.
However, waste and recycling rates are based on specialty stores and AEON MALL offices, copy paper on AEON MALL offices only, and the Planted trees on all shopping malls in Japan and abroad.
* Comparison with the previous year is listed in ().

Thank you for reading this booklet in its entirety.

Our ESG-related information is also introduced on our website. Please feel free to browse.

<https://www.aeonmall.com>

AEON MALL HP

Search

