

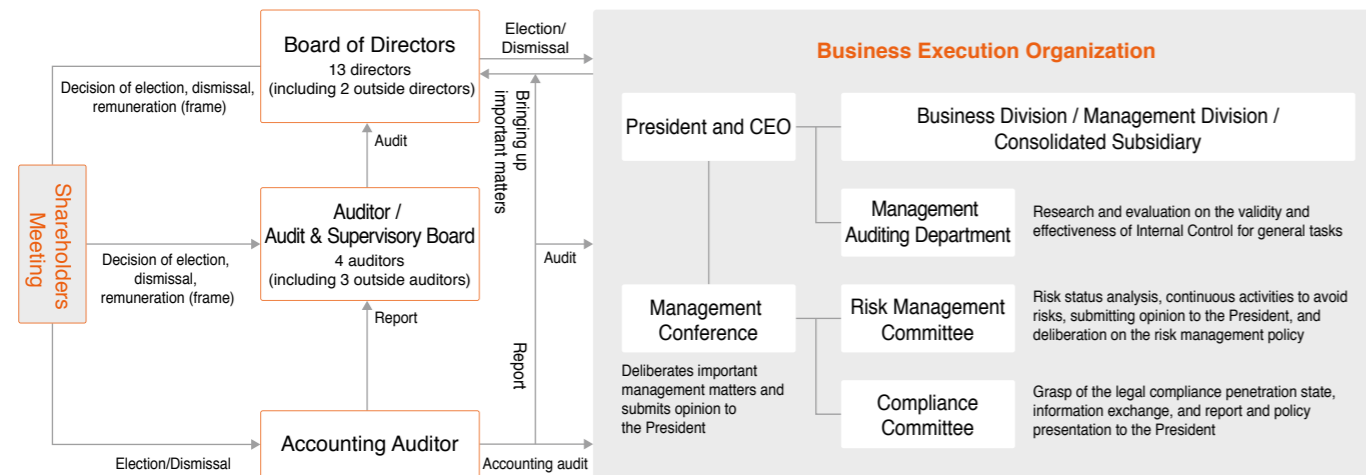
Corporate Governance

To be continuously supported by customers as a commercial facility rooted in the local community, our company recognizes corporate governance as one of the most important matters in corporate management.

Management Structure

Our company has adopted an Audit & Supervisory Board system. We are working on maintaining and enhancing soundness in management by strengthening the function of statutory auditors, as well as maintaining and improving management efficiency by composing our Board of Directors with directors who are well versed in our business.

Corporate Governance Organization Chart (As of February 28, 2018)



Board of Directors

A board meeting chaired by the President is held at least once a month with the attendance of auditors to strengthen the management oversight function. (2 directors and 2 auditors are independent directors)

Audit & Supervisory Board

Mutual information and opinion exchange between accounting auditors and Management Auditing Department that is an internal audit department to improve the validity and effectiveness of auditing.

Internal Control System (Part of important matters)

Information storage and management

We store and manage documents such as settlement documents and meeting minutes in a high searchability state which is appropriate and secure in accordance with the storage medium, maintain the browsability state as necessary, and the relevant department specified in the "Document Management Regulations" prevents leakage outside the company.

Risk management

We will endeavor to reduce risks and damage by formulating "Managerial Crisis Management Rules" (risk management regulations) to prevent occurrence of risks and minimize damage when a crisis occurs. If an urgent and serious loss risk occurs, accurately handle the loss through appropriate transmission of information and decision-making based on these rules.

Pointing out problems and improvement

By establishing a "Compliance Committee" chaired by the General Manager of Administration Division, we report the minutes of the committee to the management council and report the important matters to the Board of Directors. We also establish a help line AEON MALL "Personnel Dial 110" ("Labor Union Dial 110" in the Labor Union of our company) as an internal whistle blowing contact point to prevent whistleblowers from being put at a disadvantage. When any report or notification has been made, the department in charge carefully examines the contents and takes necessary measures based on our internal rules if there is an act of violation, before formulating measures to prevent a recurrence and report them to the "Compliance Committee".

AEON MALL Data

FY2018 data of each shopping mall (as of February 2018)

Note: Comprehensive partnership agreements and mutual cooperation partnership agreements AEON Co., Ltd. has concluded are included in the disaster-prevention agreement column.

Hokkaido

	Opening Day	Gross Leasable Area (m ²)	Parking (cars)	Planted Trees	Mall Employees	Disaster Prevention Agreement	AED Installations	Blood Donors	Disabled Parking Lot	Solar panel capacity (kW)	Air-condition ventilation energy-saving	Normal Charger (EV)	Quick Charger (EV)
1. AEON MALL Around Asahikawa Station	Mar. 2015	28,800	900	400	1,768	Jan. 2015	3	15,411	6	—	—	2	—
2. QUALITE PRIX	Dec. 2016	13,200	1,750	—	827	Jan. 2015	1	—	—	—	—	—	—

Tohoku

	Opening Day	Gross Leasable Area (m ²)	Parking (cars)	Planted Trees	Mall Employees	Disaster Prevention Agreement	AED Installations	Blood Donors	Disabled Parking Lot	Solar panel capacity (kW)	Air-condition ventilation energy-saving	Normal Charger (EV)	Quick Charger (EV)
3. AEON MALL Tsugaru Kashiwa	Nov. 1992	40,000	2,600	72,000	842	Aug. 2006	3	663	—	—	—	7	1
4. AEON MALL Shimoda	Apr. 1995	59,000	4,000	50,000	1,455	Jul. 2006	4	847	—	—	—	4	1
5. AEON MALL Morioka	Aug. 2003	46,000	2,600	26,020	1,720	Aug. 2006	4	431	—	—	○	8	1
6. AEON MALL Moriokaminami	Sep. 2006	42,000	2,400	17,044	1,806	Aug. 2006	3	457	—	—	—	8	1
7. AEON MALL Natori	Feb. 2007	67,000	3,900	20,000	2,588	Jan. 2007	4	1,633	25	460	—	10	—
8. AEON MALL Rifu	Apr. 2000	33,000	2,200	25,016	1,205	Aug. 2006	2	448	21	—	—	12	1
9. AEON MALL Tomiya	Mar. 2003	27,000	1,400	8,592	1,017	Jun. 2006	4	656	—	—	—	13	1
10. AEON MALL Ishinomaki	Mar. 2007	42,000	2,600	19,205	1,534	Nov. 2006	3	1,571	16	50	—	9	1
11. AEON MALL Akita	Sep. 1993	58,000	3,200	43,000	2,240	May 2006	6	1,008	—	—	—	1	1
12. AEON MALL Omagari	Oct. 2008	48,000	2,900	15,208	1,036	Oct. 2008	1	613	12	—	—	1	1
13. AEON MALL Tendo	Mar. 2014	47,000	2,600	15,000	1,786	Jun. 2015	4	369	17	—	—	12	2
14. AEON MALL Yamagataminami	Nov. 2000	26,000	1,700	21,027	859	Oct. 2010	2	225	—	—	—	7	1
15. AEON MALL Mikawa	Jul. 2001	40,000	3,300	27,662	667	Jul. 2006	3	766	—	—	—	11	1
16. Shopping Mall FESTA	Apr. 1996	32,000	3,800	26,000	939	May 2006	3	—	—	—	—	—	—

Kanto

	Opening Day	Gross Leasable Area (m ²)	Parking (cars)	Planted Trees	Mall Employees	Disaster Prevention Agreement	AED Installations	Blood Donors	Disabled Parking Lot	Solar panel capacity (kW)	Air-condition ventilation energy-saving	Normal Charger (EV)	Quick Charger (EV)
17. AEON MALL Mito Uchihara	Nov. 2005	78,000	4,500	49,000	3,591	Aug. 2006	4	1,215	11	131	○	13	—
18. AEON MALL Tsukuba	Mar. 2013	64,000	4,000	15,000	2,096	Oct. 2011	6	396	15	460	○	12	1
19. AEON MALL Shimotsuma	Nov. 1997	36,000	3,100	16,473	1,002	Sep. 2006	2	—	14	65	—	14	1
20. AEON MALL Tsuchiura	May 2009	58,000	3,300	20,000	2,162	Jun. 2009	2	583	20	130	—	10	1
21. AEON MALL Oyama	Apr. 1997	30,300	1,500	19,493	1,011	Jul. 2006	3	740	—	50	○	11	1
22. AEON MALL Sanoshintoshi	Apr. 2003	32,000	2,300	11,827	1,211	Jul. 2006	4	1,073	12	—	—	11	1
23. AEON MALL Ota	Dec. 2003	62,000	4,200	54,000	2,430	Jul. 2006	5	361	14	—	○	13	—
24. AEON MALL Takasaki	Oct. 2006	59,000	4,200	50,000	2,199	Nov. 2007	4	2,114	12	—	○	12	—
25. AEON MALL Kawaguchi	Apr. 1984	34,000	1,400	250	791	Nov. 2006	5	—	—	—	—	—	—
26. AEON MALL Kawaguchi Maekawa	Nov. 2000	66,000	2,400	20,000	2,590	Nov. 2006	4	150	—	—	—	11	1
27. AEON MALL Hanyu	Nov. 2007	75,000	5,000	90,000	3,416	Oct. 2007	7	1,792	21	100	—	8	1
28. AEON LakeTown kaze	Oct. 2008	59,000	2,350	28,000	3,886	Oct. 2008	5	—	32	253	○	9	1
29. AEON LakeTown mori	Sep. 2008	99,000	6,100	50,000	5,448	Aug. 2006	6	25,492	20	241	—	22	2
30. AEON LakeTown outlet	Apr. 2011	23,000	1,100	1,000	927	Aug. 2006	1	—	10	10	—	15	1
31. AEON MALL Kasukabe	Mar. 2013	56,000	2,900	15,000	2,359	Aug. 2006	6	1,047	17	203	○	13	—
32. AEON MALL Kitatoda	Nov. 2004	44,000	2,600	12,627	2,346	Jul. 2006	3	—	7	—	—	8	1
33. AEON MALL Yono	Dec. 2004	41,000	3,000	16,371	2,178	Aug. 2006	3	354	6	—	—	12	1
34. AEON MALL Urawamisono	Apr. 2006	62,000	3,000	25,641	2,906	Aug. 2006	4	136	16	100	—	10	1
35. AEON MALL Futtsu	Sep. 1993	28,000	1,000	32,000	778	Aug. 2006	6	186	16	—	○	1	1
36. AEON MALL Narita	Mar. 2000	65,000	3,600	46,000	850	Aug. 2006	6	3,070	16	—	○	11	1

AEON MALL Data FY2018 data of each shopping mall (as of February 2018)

Kanto (Continued)

	Opening Day	Gross Leasable Area (m ²)	Parking (cars)	Planted Trees	Mall Employees	Disaster Prevention Agreement	AED Installations	Blood Donors	Disabled Parking Lot	Solar panel capacity (kW)	Air-condition ventilation energy-saving	Normal Charger (EV)	Quick Charger (EV)
37. AEON MALL Chiba NEW TOWN	Apr. 2006	79,000	4,000	14,000	2,444	Mar. 2007	5	2,120	17	—	○	12	1
38. AEON MALL Makuhari New City	Dec. 2013	128,000	7,300	50,000	5,295	Jan. 2007	18	237	43	1,798	○	35	4
39. AEON MALL Kisarazu	Oct. 2014	84,000	4,000	61,570	2,407	Jun. 2015	3	1,464	11	1,334	○	12	2
40. AEON MALL Tsudanuma	Sep. 2003	27,000	1,300	1,549	2,076	Jul. 2006	2	—	9	—	—	8	1
41. AEON MALL Yachiyomidorigaoka	Mar. 2005	42,000	2,500	11,535	2,210	Jul. 2006	3	468	—	50	—	11	1
42. AEON MALL Kashiwa	May 2006	30,000	2,000	7,896	1,625	Aug. 2006	2	26	—	12	—	6	1
43. AEON MALL Choshi	Mar. 2010	31,000	3,200	35,000	1,069	Mar. 2010	2	1,044	11	20	○	9	1
44. AEON MALL Funabashi	Apr. 2012	36,000	2,300	17,346	2,033	Mar. 2012	2	40	20	100	—	8	2
45. Yumiru Kamatori SC	Mar. 1994	28,000	1,400	4,461	1,598	Jan. 2007	3	—	—	—	○	—	—
46. AEON Marinpia Senmonkan	Oct. 2003	11,000	300	—	349	Jan. 2007	1	—	4	—	—	—	—
47. AEON MALL Musashi Murayama	Nov. 2006	78,000	4,000	45,000	3,448	Sep. 2006	4	671	49	—	○	12	1
48. AEON MALL Hinode	Nov. 2007	64,000	3,650	58,000	2,701	Nov. 2007	4	964	16	100	○	8	1
49. AEON MALL Tamadaira Woods	Nov. 2014	24,000	980	600	1,945	Sep. 2014	3	129	—	—	○	1	1
50. AEON MALL Higashikurume	Apr. 2013	31,000	1,600	20,000	1,736	Apr. 2013	4	442	9	10	—	14	—
51. AEON Itabashi SC	May 2000	35,000	900	—	930	Sep. 2007	1	324	—	6	—	11	1
52. AEON MALL Yamato	Dec. 2001	35,000	1,900	20,000	1,951	Apr. 2006	4	2,361	—	—	—	12	—
53. AEON Ebina SC	Nov. 1979	32,000	1,500	—	985	Apr. 1994	1	—	16	—	—	6	—
54. AEON Sagamiyama SC	Aug. 1993	27,000	1,500	34,001	1,572	Apr. 1992	3	46	—	—	—	7	1
55. AEON Hadano SC	Nov. 1995	28,000	1,900	6,625	1,444	Aug. 2006	3	1,674	—	50	—	1	1

Chubu

	Opening Day	Gross Leasable Area (m ²)	Parking (cars)	Planted Trees	Mall Employees	Disaster Prevention Agreement	AED Installations	Blood Donors	Disabled Parking Lot	Solar panel capacity (kW)	Air-condition ventilation energy-saving	Normal Charger (EV)	Quick Charger (EV)
56. AEON MALL Shibata	Apr. 2005	33,000	1,650	14,210	996	Jul. 2006	3	96	10	—	—	11	1
57. AEON MALL Niigataminami	Oct. 2007	51,000	4,000	30,396	2,498	Jul. 2008	6	1,010	14	—	—	11	1
58. AEON MALL Takaoka	Sep. 2002	62,000	3,600	44,000	1,971	Dec. 2007	3	2,025	—	—	○	9	1
59. AEON MALL Tonami	Jul. 2015	32,000	1,700	7,000	1,044	Jun. 2015	2	149	—	—	—	12	2
60. AEON MALL Kahoku	Oct. 2008	62,000	3,300	29,391	1,361	Oct. 2008	2	176	12	73	—	11	1
61. AEON MALL Shinkomatsu	Mar. 2017	63,000	3,400	18,371	2,234	Mar. 2017	3	—	16	—	—	12	1
62. AEON Okyozuka SC	Mar. 1998	33,000	1,700	—	801	Mar. 2012	3	82	—	—	—	8	1
63. AEON MALL Koufushowa	Mar. 2011	45,000	3,300	20,000	2,832	Feb. 2011	4	611	9	—	—	3	2
64. AEON MALL Sakudaira	Apr. 1999	25,000	2,000	19,247	1,001	Sep. 2011	2	461	23	—	—	13	1
65. AEON MALL Matsumoto	Sep. 2017	49,000	2,300	6,758	2,540	Feb. 2008	4	—	11	—	—	2	2
66. AEON MALL Ogaki	Apr. 2007	43,000	2,500	29,253	1,425	Mar. 2007	3	841	10	50	○	11	1
67. AEON MALL Kakamigahara	Jul. 2007	77,000	5,700	62,643	4,088	Jul. 2007	3	863	20	80	—	9	1
68. AEON MALL Hamamatsu Shitoro	Aug. 2004	65,000	3,500	38,000	2,466	Dec. 2011	5	402	58	91	—	9	1
69. AEON MALL Fujinomiya	Dec. 2001	40,000	2,500	24,231	1,766	Sep. 2006	3	1,146	45	—	—	11	1
70. AEON MALL Hamamatsuichino	Jun. 2005	63,000	4,000	19,299	3,174	Sep. 2006	3	790	67 (incl. 16 pre-park)	50	—	11	1
71. AEON MALL Okazaki	Sep. 2000	80,000	4,300	48,050	3,627	Mar. 2007	9	1,105	42	—	—	13	—
72. AEON MALL Higashiura	Jul. 2001	55,000	5,000	25,000	2,175	Jul. 2006	7	291	—	—	—	13	—
73. AEON MALL Kisogawa	Jun. 2004	66,000	4,400	15,000	3,035	Sep. 2014	2	2,270	16	—	—	8	1
74. AEON MALL Aratamabashi	Mar. 2010	38,000	1,700	5,000	1,900	Feb. 2010	6	138	22	69	—	9	—
75. AEON MALL Nagoya Chaya	Jun. 2014	75,000	4,100	18,956	2,450	Jan. 2012	3	407	8	266	○	11	2
76. AEON MALL Tokoname	Dec. 2015	67,700	4,000	12,000	2,357	Nov. 2015	3	1,007	20	—	—	12	2
77. AEON MALL Nagakute	Dec. 2016	59,000	2,600	8,134	3,302	Dec. 2016	7	—	13	362	—	12	2
78. AEON MALL Nagoyaminato	Nov. 1999	44,000	3,000	36,484	1,235	Oct. 2006	2	91	—	—	—	11	1
79. AEON MALL Atsuta	Jul. 2003	47,000	3,700	12,331	2,821	Jul. 2006	4	365	—	—	—	11	1

Chubu (Continued)

	Opening Day	Gross Leasable Area (m ²)	Parking (cars)	Planted Trees	Mall Employees	Disaster Prevention Agreement	AED Installations	Blood Donors	Disabled Parking Lot	Solar panel capacity (kW)	Air-condition ventilation energy-saving	Normal Charger (EV)	Quick Charger (EV)
80. AEON MALL Fuso	Aug. 2003	34,000	2,800	17,887	1,446	Jul. 2006	1	256	31	50	○	11	1
81. AEON MALL Around Nagoya Dome	Mar. 2006	48,000	2,800	12,736	2,887	May 2009	3	—	16	—	—	11	1
82. AEON MALL Odaka	Mar. 2008	65,000	4,000	25,000	4,074	Feb. 2008	2	—	12	50	—	21	1
83. AEON Kasugai SC	Apr. 1991	33,000	1,590	—	940	Jul. 2009	1	89	20	—	○	1	1
84. mozo wondercity	Apr. 2009	101,000	5,000	20,000	4,575	—	3	533	14	—	—	1	1

Kinki

	Opening Day	Gross Leasable Area (m ²)	Parking (cars)	Planted Trees	Mall Employees	Disaster Prevention Agreement	AED Installations	Blood Donors	Disabled Parking Lot	Solar panel capacity (kW)	Air-condition ventilation energy-saving	Normal Charger (EV)	Quick Charger (EV)
85. AEON MALL Suzuka	Nov. 1996	70,000	4,200	36,000	2,731	Aug. 2006	4	1,712	16	—	—	10	1
86. AEON MALL Toin	Nov. 2013	58,000	2,300	15,000	2,308	Oct. 2013	3	174	15	322	—	7	2
87. AEON MALL Yokkaichikita	Jan. 2001	42,000	3,000	38,478	1,376	Aug. 2008	1	797	26	50	—	1	1
88. AEON MALL Meiwa	Jul. 2001	34,000	3,100	39,467	1,088	Mar. 2012	2	—	52	50	—	10	—
89. AEON MALL Kuwana	Mar. 1995	38,000	4,000	—	1,402	Mar. 2004	2	—	—	—	—	11	—
90. AEON Tsu SC	Sep. 1978	34,000	1,200	141	832	Dec. 2006	2	—	—	—	—	—	—
91. AEON MALL Kusatsu	Nov. 2008	78,000	4,300	20,000	3,044	Oct. 2008	5	1,324	48	200	○	11	2
92. AEON Oumihachiman SC	Apr. 1991	35,000	2,100	—	863	Mar. 1996	4	169	—	—	—	10	—
93. AEON MALL Kyoto Gojo	Mar. 2004	36,000	1,600	11,000	2,140	Sep. 2010	4	338	—	—	—	9	1
94. AEON MALL KYOTO	Jun. 2010	50,000	1,100	—	2,940	Sep. 2011	5	423	—	—	○	1	1
95. AEON MALL Kyoto Katsuragawa	Oct. 2014	77,000	3,100	10,553	4,444	Oct. 2014	5	899	23	339	—	13	4
96. AEON MALL Kumiyaama	Jun. 1999	39,000	3,000	22,191	1,683	Sep. 2011	2	678	7	30	—	1	1
97. AEON MALL Takanohara	May 2007	44,000	2,000	17,158	2,533	Sep. 2011 Kyoto Mar. 2011 Nara	3	168	15	100	—	—	1
98. AEON Rakunan SC	Jul. 1998	26,000	1,800	8,233	1,229	Sep. 2011	2	172	—	—	—	11	1
99. AEON MALL Sakai Kitahanada	Oct. 2004	72,000	2,800	6,000	2,708	Jan. 2015	5	699	6	50	—	11	1
100. AEON MALL Rinku Sennan	Nov. 2004	76,000	4,300	66,000	3,410	Sep. 2005	5	1,591	—	83	○	11	2
101. AEON MALL Tsurumi Ryokuchi	Nov. 2006	53,000	2,200	12,000	2,334	Jun. 2010	5	130	—	—	—	10	1
102. AEON MALL Shijonawate	Oct. 2015	75,000	4,300	20,000	3,803	Oct. 2015	6	723	13	815	—	12	2
103. AEON MALL Sakai Teppouchou	Mar. 2016	56,000	2,600	10,000	2,611	Mar. 2016	4	59	13	473	○	10	2
104. AEON MALL Hineno	Apr. 1995	29,787	2,000	32,781	1,219	Apr. 2011	2	356	42	—	—	10	1
105. AEON MALL Dainichi	Sep. 2006	56,000	2,400	15,416	3,651	Aug. 2008	1	892	16	14	—	11	2
106. AEON MALL Osaka Dome City	May 2013	34,000	670	4,200	1,660	Jan. 2014	5	—	16	54	—	4	—
107. AEON MALL Ibaraki	Jan. 2001	46,000	2,400	—	2,675	Sep. 2008	4	151	36	—	—	11	1
108. AEON SENRITO Special Mall	Apr. 2017	9,100	400	—	534	—	—	—	—	—	—	—	—
109. AEON MALL Itami	Oct. 2002	57,000	2,800	30,000	3,243	Feb. 2012	4	294	—	102	—	8	1
110. AEON MALL Kobe Kita	Nov. 2006	55,000	4,000	56,000	2,745	Oct. 2006	7	892	40	—	—	10	1
111. AEON MALL Kobe Minami	Jun. 2017	39,000	1,400	3,000	3,106	Sep. 2017	3	55	14	—	—	2	2
112. AEON MALL Himeji River City	Nov. 1993	36,000	2,600	11,817	1,607	Mar. 2013	2	556	32	—	—	11	1
113. AEON MALL Inagawa	Apr. 1998	21,000	2,000	38,818	1,303	Feb. 2012	2	75	9	—	—	1	1
114. AEON MALL Himejiotsu	Dec. 2004	34,000	2,600	16,151	1,705	Feb. 2012	2	460	35	100	—	11	1
115. AEON MALL Kasaihojyo	Nov. 2008	33,000	2,100	11,864	1,122	Feb. 2012	4	381	14	55	—	8	1
116. AEON MALL Itamikoyama	Mar. 2011	48,000	2,400	10,300	2,605	Feb. 2012	6	284	23	1,160	—	14	1
117. AEON Akashi SC	Oct. 1997	58,000	3,500	—	1,406	Feb. 2012	2	332	—	—	—	8	—
118. Kobe Harborland umie	Apr. 2013	85,000	3,000	—	4,571	—	4	—	—	—	—	—	2
119. AEON MALL Kashihara	Apr. 2004	80,000	5,000	25,000	3,390	Nov. 2010	5	5,317	15	59	○	9	1
120. AEON MALL Yamatokoriyama	Mar. 2010	67,000	4,200	20,000	2,860	Mar. 2010	4	939	11	—	○	8	1
121. AEON MALL Naratomiogaoka	Jul. 2006	31,000	1,560	15,118	1,342	Jun. 2007	2	323	3	—	—	11	1
122. AEON MALL Wakayama	Mar. 2014	69,000	3,500	20,000	3,041	Mar. 2014	5	1,058	17	454	—	12	4

AEON MALL Data FY2018 data of each shopping mall (as of February 2018)

Chugoku - Shikoku

	Opening Day	Gross Leasable Area (m ²)	Parking (cars)	Planted Trees	Mall Employees	Disaster Prevention Agreement	AED Installations	Blood Donors	Disabled Parking Lot	Solar panel capacity (kW)	Air-condition ventilation energy-saving	Normal Charger (EV)	Quick Charger (EV)
123. AEON MALL Hiezu	Mar. 1999	47,000	2,900	25,486	1,475	Aug. 2006	2	8,086	11	100	—	1	1
124. AEON MALL Tottorikita	Apr. 2000	48,000	3,100	9,000	1,130	Mar. 2007	2	513	10	—	—	17	1
125. AEON MALL Izumo	May 2016	32,000	2,000	9,000	1,013	Jan. 2009	2	278	12	50	—	11	2
126. AEON Matsue SC	May 1994	32,000	1,800	—	1,089	Oct. 1997	2	369	20	—	—	10	—
127. AEON MALL Kurashiki	Sep. 1999	83,000	4,700	70,000	2,661	Aug. 2006	6	8,667	29	20	—	11	4
128. AEON MALL Okayama	Dec. 2014	92,000	2,500	7,898	6,610	Nov. 2014	5	28	12	306	—	9	2
129. AEON MALL Tsuyama	Dec. 1996	30,000	2,000	18,668	945	Mar. 1998	2	790	10	—	—	1	1
130. AEON MALL Hiroshima Fuchu	Mar. 2004	76,698	5,000	64,000	4,345	Apr. 2007	4	123	7	519	—	12	2
131. AEON MALL Hiroshima Gion	Apr. 2009	50,000	2,800	20,000	2,113	Sep. 2009	6	426	14	68	—	8	1
132. Hiroshima Danbara SC	Sep. 2011	24,000	800	—	571	Oct. 2012	1	—	—	—	—	—	—
133. AEON MALL Tokushima	Apr. 2017	50,000	3,100	4,300	2,564	Jan. 2016	5	46	5	—	—	11	2
134. AEON MALL Takamatsu	Apr. 2007	47,000	3,000	12,500	1,135	Jun. 2007	2	263	16	50	—	9	1
135. AEON MALL Ayagawa	Jul. 2008	57,000	4,000	49,044	1,757	Jun. 2008	3	509	16	140	—	8	1
136. AEON MALL Nihama	Jun. 2001	67,000	3,500	35,000	1,563	Aug. 2006	5	1,068	10	30	—	11	1
137. AEON MALL Imabari New City	Apr. 2016	54,000	2,900	10,000	1,382	Jul. 2017	3	531	34	—	—	12	2
138. AEON MALL Kochi	Dec. 2000	57,000	2,700	23,000	2,145	Sep. 2007	6	1,379	—	109	—	1	1

Kyusyu - Okinawa

	Opening Day	Gross Leasable Area (m ²)	Parking (cars)	Planted Trees	Mall Employees	Disaster Prevention Agreement	AED Installations	Blood Donors	Disabled Parking Lot	Solar panel capacity (kW)	Air-condition ventilation energy-saving	Normal Charger (EV)	Quick Charger (EV)
139. AEON MALL Fukuoka	Jun. 2004	90,000	5,000	14,000	2,799	Apr. 2012	6	1,659	21	—	—	6	1
140. AEON MALL Nogata	Apr. 2005	58,000	3,400	39,000	2,083	Aug. 2006	4	155	20	—	—	9	1
141. AEON MALL Chikushino	Dec. 2008	80,000	3,800	20,000	3,098	Apr. 2009	6	2,939	17	110	—	11	1
142. AEON MALL Omuta	Mar. 2011	57,000	4,800	20,000	1,786	Sep. 2011	3	1,107	16	590	—	11	—
143. AEON MALL Fukutsu	Apr. 2012	61,000	3,500	27,000	2,639	Mar. 2012	4	1,444	25	—	—	12	—
144. AEON MALL Yahatahigashi	Nov. 2006	44,341	2,200	19,242	1,690	Aug. 2007	2	713	10	204	—	2	—
145. AEON MALL Uki	Nov. 1997	63,000	3,300	50,000	785	Nov. 2007	2	32	—	1,409	—	10	—
146. AEON MALL Kumamoto	Oct. 2005	73,000	4,800	27,000	2,190	Oct. 2006	3	1,965	—	—	—	12	—
147. AEON MALL Sankoh	Dec. 1996	40,000	2,500	36,000	803	Feb. 2006	3	1,005	—	—	—	1	1
148. AEON MALL Miyazaki	May 2005	70,000	4,000	56,000	2,317	Sep. 2006	6	682	12	50	—	11	—
149. AEON MALL Around Miyakonojo Station	Dec. 2008	28,000	1,700	8,000	1,060	Nov. 2008	3	566	—	90	—	9	1
150. AEON MALL Okinawa Rycom	Apr. 2015	78,000	4,000	26,000	3,315	—	6	595	—	259	—	14	4

China

	Opening Day	Gross Leasable Area (m ²)	Parking (cars)	Planted Trees	Mall Employees	LED	Solar-Power (kW)	Auto control (electricity/air-condition)	Freezer Inverter Control	Curtain Wall Shading/heat shield Film	Biotop	Gray Water Usage (green zone watering)	EV charge station
151. AEON MALL Beijing International Mall	Nov. 2008	53,000	3,000	8,000	Approx. 1,760	—	—	—	—	—	—	—	—
152. AEON MALL Beijing Fengtai	Sep. 2015	58,000	2,000	3,969	Approx. 1,140	—	65	—	—	—	—	—	16
153. AEON MALL Tianjin TEDA	Oct. 2010	55,000	2,500	8,000	Approx. 720	—	—	—	—	—	—	—	—
154. AEON MALL Tianjin Zhongbei	Apr. 2012	62,000	3,700	10,000	Approx. 2,090	—	—	—	—	—	—	—	—
155. AEON MALL Tianjin Meijiang	Jan. 2014	63,000	2,400	10,000	Approx. 1,360	—	—	—	—	—	—	—	—
156. AEON MALL Tianjin Jinnan	Oct. 2017	70,000	2,600	6,000	Approx. 2,360	—	85	—	—	—	—	—	75
157. AEON MALL Hebei Yanjiao	Nov. 2016	70,000	3,000	6,000	Approx. 2,500	—	85	—	—	—	—	—	98
158. AEON MALL Suzhou Wuzhong	Apr. 2014	75,000	3,100	6,000	Approx. 3,300	—	50	—	—	—	—	—	—
159. AEON MALL Suzhou Yuanqu Hudong	May 2015	75,000	3,000	3,300	Approx. 2,920	—	43	—	—	—	—	—	8
160. AEON MALL Suzhou Xinqu	Jan. 2016	74,000	3,200	3,817	Approx. 3,960	—	60	—	—	—	—	—	132
161. AEONMALL Nantong Xinghu	Dec. 2017	77,000	3,000	6,000	Approx. 2,800	—	360	—	—	—	—	—	60
162. AEON MALL Hangzhou Liangzhu Xincheng	Nov. 2015	66,000	2,500	4,000	Approx. 1,020	—	30	—	—	—	—	—	15

China (Continued)

	Opening Day	Gross Leasable Area (m ²)	Parking (cars)	Planted Trees	Mall Employees	LED	Solar-Power (kW)	Auto control (electricity/air-condition)	Freezer Inverter Control	Curtain Wall Shading/heat shield Film	Biotop	Gray Water Usage (green zone watering)	EV charge station
163. AEON MALL Wuhan Jinyintan	Dec. 2014	74,000	2,900	3,000	Approx. 3,210	—	—	—	—	—	—	—	—
164. AEON MALL Wuhan Jinqiao	Dec. 2017	54,700	1,700	2,500	Approx. 2,000	—	—	—	—	—	—	—	—
165. AEON MALL Wuhan Jingkai	Dec. 2015	105,000	4,000	5,000	Approx. 2,372	—	520	—	—	—	—	—	20
166. AEON MALL Guangzhou Panyu Square	Dec. 2015	65,000	1,700	3,500	Approx. 2,350	—	—	—	—	—	—	—	17
167. AEON MALL Foshan Dali	Dec. 2017	69,000	2,700	4,000	Approx. 1,370	—	190	—	—	—	—	—	20

Vietnam

	Opening Day	Gross Leasable Area (m ²)	Parking (cars)	Planted Trees	Mall Employees	Disabled Parking Lot	LED	Solar-Power (kW)	High-efficiency air-conditioner	Human Sensor Lighting ON/OFF Control	Automatic Escalator Operation Control	Mur-muring River	Wastewater Purification Facility
168. AEON MALL Tan Phu Celadon	Jan. 2014	49,900	Motorcycle 4,000 Car 500	10,000	Approx. 2,830	—	—	—	—	—	—	—	—
169. AEON MALL Binh Tan	Jul. 2016	59,000	Motorcycle Approx. 4,000 Car Approx. 1,500	10,000	Approx. 3,000	17	—	320	—	—	—	—	—
170. AEON MALL Binh Duong Canary	Nov. 2014	46,000	Motorcycle Approx. 6,000 Car Approx. 1,000	10,000	Approx. 2,000	—	—	—	—	—	—	—	—
171. AEON MALL Long Bien	Oct. 2015	72,000	Motorcycle Approx. 10,000 Car Approx. 1,000	11,300	Approx. 2,200	8	—	—	—	—	—	—	—

Cambodia

	Opening Day	Gross Leasable Area (m ²)	Parking (cars)	Planted Trees	Mall Employees	Disabled Parking Lot	LED	Solar-Power (kW)	High-efficiency air-conditioner	Human Sensor Lighting ON/OFF Control	Automatic Escalator Operation Control	Mur-muring River	Wastewater Purification Facility
172. AEON MALL Phnom Penh	Jun. 2014	66,300	Motorcycle Approx. 1,600 Car Approx. 2,300	10,000	Approx. 2,500	9	—	225	—	—	—	—	—

Indonesia

	Opening Day	Gross Leasable Area (m ²)	Parking (cars)	Planted Trees	Mall Employees	Disabled Parking Lot	LED	Solar-Power (kW)	High-efficiency air-conditioner	Human Sensor Lighting ON/OFF Control	Automatic Escalator Operation Control	Mur-muring River	Wastewater Purification Facility
173. AEON MALL BSD CITY	May 2015	77,000	Motorcycle Approx. 2,300 Car Approx. 2,100	20,000	Approx. 3,000	—	—	24	—	—	—	—	—
174. AEON MALL Jakarta Garden City	Sep. 2017	63,000	Motorcycle Approx. 1,400 Car Approx. 3,000	8,000	Approx. 2,500	20	—	510	—	—	—	—	—

OPA

	Opening Day	Gross Leasable Area (m ²)	Parking (cars)	Site Area (m ²)	Total Floor Area (m ²)	Number of specialty stores
175. AKITA OPA	Oct. 2017	11,000	3,000	2,800	19,800	58
176. MITO OPA	Mar. 2017	12,500	1,500	3,500	25,500	58
177. TAKASAKI OPA	Oct. 2017	26,000	7,000	7,400	42,000	161
178. SEISEKI-SAKURAGAOKA OPA	Sep. 1999	16,100	400	9,000	23,400	60
179. SHINYURIGAOKA OPA	Nov. 1997	12,100	100	5,000	22,290	94
180. FUJISAWA OPA	Mar. 1996	9,000	800	2,100	19,000	64
181. KAWARAMACHI OPA	Nov. 1998	9,800	—	2,700	18,900	107
182. UMEDA OPA	Apr. 2013	2,200	—	—	3,300	20
183. SHINSAIBASHI OPA SAIBASHI OPA Kirei-kan	Nov. 1994 Aug. 1998	10,500 2,300	— —	2,800 1,000	27,000 4,900	85 11
184. SANNOMIYA OPA2	Feb. 2017	11,700	1,700	4,700	17,600	47
185. CANAL CITY OPA	Jul. 1996	13,300	2,400	—	26,000	115
186. VIVRE GENE LakeTown	Sep. 2008	2,900	8,300	—	4,300	23
187. YOKOHAMA VIVRE	Oct. 1978	17,800	100	6,000	44,800	137
188. WORLD PORTERS VIVRE	Sep. 1999	18,100	1,100	20,000	35,300	93
189. NAGOYA WONDER CITY VIVRE	Apr. 2009	2,700	5,100	—	3,600	13
190. KITAOJI VIVRE	Mar. 1995	22,180	500	17,600	76,200	94
191. SANNOMIYA VIVRE	Nov. 1969	5,700	—	1,500	10,800	35
192. AKASHI VIVRE	Oct. 1997	16,400	700	11,700	53,200	70
193. TENJIN VIVRE	Nov. 1976	9,770	1,100	2,400	23,900	84
194. SENDAI FORUS	Nov. 1984	14,600	4,500	4,300	32,000	117
195. KANAZAWA FORUS	Nov. 2006	26,100	4,200	100,300	60,300	197